

# SEND NEWSLETTER

## Issue 1 March 2018

I

**SPECIAL EDUCATIONAL NEEDS AND DISABILITY INFORMATION FOR PROFESSIONALS, PARENTS/CARERS AND VOLUNTEERS**



Welcome to the first edition of the SEND Newsletter. The aim of this newsletter is to keep you up to date with information about special educational needs and disability, especially what's going on in our local area.

This edition contains information on the following:

- P2 - Children's Services Re-Structure – Children's Commissioning and Quality Monitoring Team
- P3 - Children's Commissioning and Quality Monitoring Team Structure Chart
- P4 – Children's Services Re-Structure – 0-25 SEND Team
- P5 – 0-25 SEND Team Structure Chart
- P6 – SEND Single Route of Redress National Trial
- P7 – Local contact information

### **WOULD YOU LIKE TO SUBMIT AN ARTICLE?**

Please contact:

Ellie Gray

SEND Strategic Manager

Email: [ellie.gray@eastriding.gov.uk](mailto:ellie.gray@eastriding.gov.uk)

# SEND NEWSLETTER

## Issue 1 March 2018

2

**SPECIAL EDUCATIONAL NEEDS AND DISABILITY INFORMATION FOR PROFESSIONALS, PARENTS/CARERS AND VOLUNTEERS**

### Children's Services Re-Structure



#### **Children's Commissioning and Quality Monitoring Team**

Following an internal re-structure of Children's Services, the existing functions of the former SEN Team and the Children's Commissioning and Quality Monitoring Team have been pulled together into one over-arching team.

The aim of this combined team is to ensure a clear focus for EHC Commissioning Officers (EHCCOs) on leading and facilitating the development of robust, person-centred EHC Plans (EHCPs). The ECCHOs will also commission any provision contained in the EHCP that is not able to be provided in-house.

This will allow the Commissioning and Quality Monitoring Officers (CCQMOs) to focus on undertaking strategic commissioning, including needs analysis and development of business cases and

specifications for wider services and provision, in addition to their responsibilities for quality assuring our commissioned provision.

By merging the two teams, it will ensure that processes for developing EHCPs are streamlined, including processes for decision making panels such as SEN Panel and Joint Commissioning Panel, and also ensuring that themes and trends arising from EHCPs are captured and utilised to inform our wider strategic needs analysis and commissioning.

The re-structure has enabled us to increase the resources within the expanded Children's Commissioning and Quality Monitoring Team. This has meant an increase in permanent posts for EHCCOs (previously EHC Plan Co-ordinators) from 3 f/t posts to 6 f/t posts, and increase Commissioning Assistant posts across the team to 5 permanent Assistant posts and one temporary post to assist with the implementation of the new team. You can see a structure chart for the CCQMT on Page 3.

The re-structure has also meant the addition of a brand new team aimed to provide a team around the family approach to children and young people with SEND and their families. The new 0-25 SEND Team is detailed on Page 4 of this Newsletter.

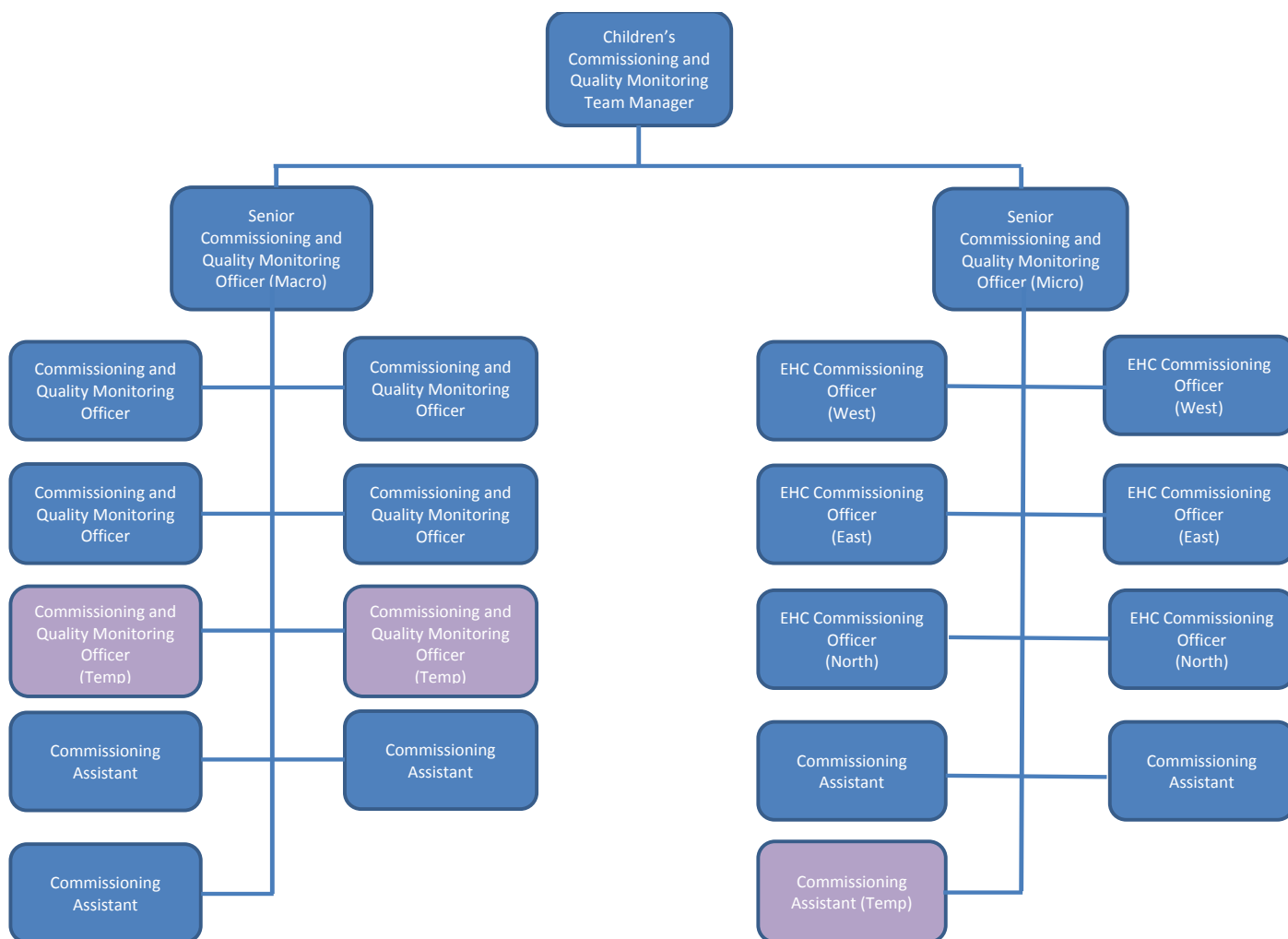
# SEND NEWSLETTER

## Issue 1 March 2018

3

**SPECIAL EDUCATIONAL NEEDS AND DISABILITY INFORMATION FOR PROFESSIONALS, PARENTS/CARERS AND VOLUNTEERS**

### Children's Commissioning and Quality Monitoring Team



### Contacting the Team

For enquiries and information relating to a child's EHCP – please use telephone number: (01482) 392163, and email address: [send.enquiries@eastriding.gov.uk](mailto:send.enquiries@eastriding.gov.uk)

For enquiries and information relating to service contracts and wider commissioning activity – please use telephone number: (01482) 392254, and email address: [childrens.commissioning.team@eastriding.gov.uk](mailto:childrens.commissioning.team@eastriding.gov.uk)

# SEND NEWSLETTER

## Issue 1 March 2018

4

**SPECIAL EDUCATIONAL NEEDS AND DISABILITY INFORMATION FOR PROFESSIONALS, PARENTS/CARERS AND VOLUNTEERS**

### Children's Services Re-Structure



#### **0-25 SEND Team**

The 0-25 SEND is a brand new team developed as part of the re-structure and with the aim of providing a team around the family approach to supporting children and young people with SEND and their families.

The new team covers the full 0-25 age range and includes a mix of experienced staff from the Children's Disability Team, Youth and Family Support, and Early Years and Family Support services in the local authority, and skilled and experienced staff who are new to the authority.

The new team became operational on 2<sup>nd</sup> January 2018 and have been working hard to get up and running and supporting families as soon as possible. Although all posts have been appointed to, there are several members of the team that are still working their notice. It is anticipated that the team will be fully staffed by 1<sup>st</sup> April 2018.

The team includes social workers (0-25), Intensive Family Co-ordinators, Family Co-ordinators (Portage), Family Co-ordinators, and SEND IAG workers and are already supporting over 300 children and young people. A structure chart for the 0-25 SEND Team is on Page 5.

They are currently reviewing and agreeing processes and support criteria to ensure clarity regarding the links between early help services, such as YFS and Early Years and Family Support, and will be liaising and meeting with teams as appropriate.

#### **Information Sharing/Meet the Team Workshops**

There are a number of information events being planned for both parents/carers and professionals to talk through the role of the new teams.

##### Parent/Carer Events

Thursday, 15<sup>th</sup> March 2018 – 10am

The Courtyard in Goole

Friday, 23<sup>rd</sup> March 2018 – 10am

Bridlington Spa

##### Professional Workshops

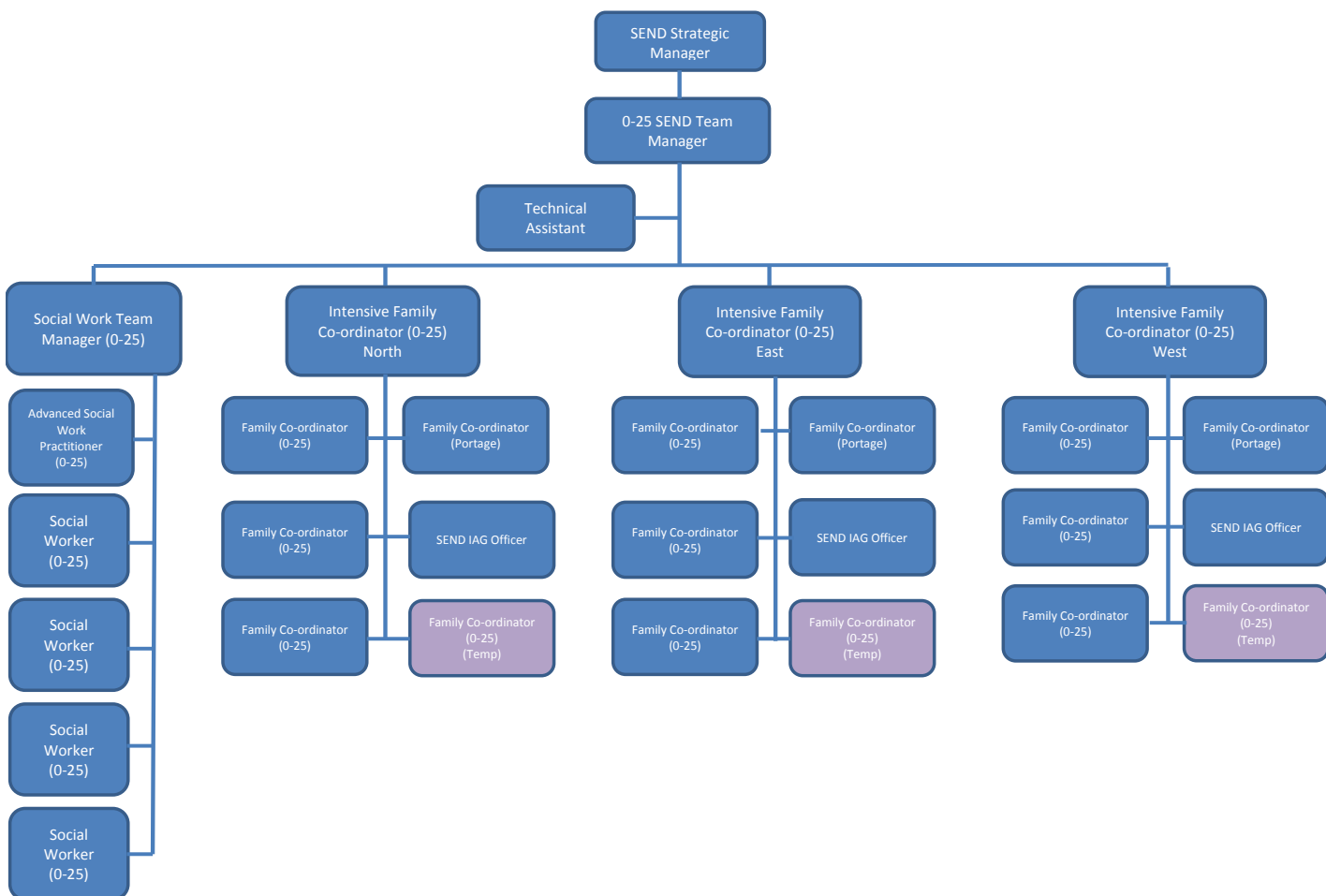
Dates/Venues to be confirmed

# SEND NEWSLETTER

## Issue 1 March 2018

### SPECIAL EDUCATIONAL NEEDS AND DISABILITY INFORMATION FOR PROFESSIONALS, PARENTS/CARERS AND VOLUNTEERS

#### 0-25 SEND Team



#### Contacting the 0-25 SEND Team

The team are based at The Hub and Specialist Services,  
 Springhead Lane,  
 Anlaby Common,  
 Hull, HU5 5YJ  
 Telephone: (01482) 394000

# SEND NEWSLETTER

## Issue 1 March 2018

6

### SPECIAL EDUCATIONAL NEEDS AND DISABILITY INFORMATION FOR PROFESSIONALS, PARENTS/CARERS AND VOLUNTEERS

#### SEND National Trial – Single Route of Redress

The Department for Education (DfE) are trialling the First-tier Tribunal (SEND) making non-binding decisions on health and social care alongside education. The trial will launch on 03 April 2018 and run for two years.

Currently appeals can only be made to the Tribunal over the education aspects of Education, Health and Care (EHC) plans, and the trial will give parents the ability to appeal associated health and social care issues via a single route.

The trial will extend the powers of the Tribunal to make non-binding recommendations about the health and social care aspects of Education, Health and Care plans.

This new approach will enable the Tribunal to take a more holistic view of children and young people's needs across education, health and social care in line with EHC plans and provide a person-centred approach to decision making. It should also provide positive benefits for families and improve joint working among commissioners.

An evaluation process will run alongside the Trial, looking at implementation, outcomes for families and commissioners and costs.

The Trial places responsibility on LA SEND teams to:

- Inform parents and young people of their new rights including through decision letters and the local offer
- Contact the relevant health or social care lead about the issues raised and provide evidence to the Tribunal on their response, bringing additional witnesses to the hearing if necessary
- Once a decision has been made, send the health or social care response to the evaluators.

It also places responsibility on health and social care commissioners to:

- Attend the hearing if required
- Respond to any request for information, such as any assessments or support provided
- Following a decision, respond to the family and the LA within 5 weeks setting out the steps they have decided to take or why they are not going to follow the recommendation.

This will give families new rights and they are advised to:

- Be clear about whether there is a health or social care issue and what the issue is
- Receive support through Information, Advice and Support Services (IASS) and other organisations in preparation for and in attending a hearing
- Feedback to the evaluators after any hearing or outcome

# SEND NEWSLETTER

## Issue 1 March 2018

7

**SPECIAL EDUCATIONAL NEEDS AND DISABILITY INFORMATION FOR PROFESSIONALS, PARENTS/CARERS AND VOLUNTEERS**

### LOCAL CONTACT INFORMATION

#### **Children's Commissioning and Quality Monitoring Team**

County Hall, Cross Street, Beverley, HU17 9BA

For EHCP enquiries:

Telephone: (01482) 392163

Email: [send.enquiries@eastriding.gov.uk](mailto:send.enquiries@eastriding.gov.uk)

For commissioning and contract enquiries:

Telephone: (01482) 392254

Email: [childrens.commissioning.team@eastriding.gov.uk](mailto:childrens.commissioning.team@eastriding.gov.uk)

#### **0-25 SEND Team**

The Hub and Specialist Services,

Springhead Lane

Anlaby Common

Hull

HU5 5YJ

Telephone: (01482) 394000

#### **Family Information Services Hub (FISH)**

Free, impartial service for children, young people, parents/carers and the people who support them:

Telephone: (01482) 396469

[www.fish.eastriding.gov.uk](http://www.fish.eastriding.gov.uk)

#### **SEND Information, Advice and Support (SENDIASS)**

SENDIASS offers impartial, confidential information, advice and support for parents and carers of children and young people (aged 0-25) with special educational needs or disabilities and those who support them;

Telephone: (01482) 396469

Email: [sendiass@eastriding.gov.uk](mailto:sendiass@eastriding.gov.uk)

#### **KIDS 16-25 SEND Information, Advice and Support Service**

A young people's information, advice, support and advocacy service.

The information and support enables young people to participate in decisions about their future and is impartial, confidential and accessible.

Telephone: (01482) 467540 (Office)

Email: [enquiries.yorkshire@kids.org.uk](mailto:enquiries.yorkshire@kids.org.uk)