

SEND NEWSLETTER

Issue 3 May/June 2018

SPECIAL EDUCATIONAL NEEDS AND DISABILITY INFORMATION FOR PROFESSIONALS,
PARENTS/CARERS, CHILDREN AND YOUNG PEOPLE, AND VOLUNTEERS



Welcome to the May/June edition of the SEND Newsletter. The aim of this newsletter is to keep you up to date with information about special educational needs and disability, especially what's going on in our local area.

This edition contains information on the following:

- P2 – High Needs Strategic Review Update
- P3 – SEND Reforms Lines of Accountability
- P4 – TYLER update
- P5 – Short Break Parent/Carer Workshops
- P6 - Moving/Handling, and Handwriting Training for Professionals
- P7 - Local News in Brief
- P8 - National News in Brief
- P9 – Local contact information

WOULD YOU LIKE TO SUBMIT AN ARTICLE?

Please contact:

Ellie Gray

SEND Strategic Manager

Email: ellie.gray@eastriding.gov.uk

SEND NEWSLETTER

Issue 3 May/June 2018

2

SPECIAL EDUCATIONAL NEEDS AND DISABILITY INFORMATION FOR PROFESSIONALS, PARENTS/CARERS, CHILDREN AND YOUNG PEOPLE, AND VOLUNTEERS

High Needs Strategic Review Progress Update

The High Needs Strategic Review undertaken by ISOS, commissioned by the local authority, was completed in November 2017.

The final report with its 19 recommendations, and the final action planning workshop summary report which took place following the review, can be found on the local offer website via:

<http://www.eastridinglocaloffer.org.uk/about-the-local-offer/>

Since Christmas, we have been busy implementing the new SEND structure and considering how the 19 recommendations within the 8 themes can sit within this structure, and which groups should be accountable for them.

As a result, we have introduced 2 task and finish groups to focus on 2 specific themes within the review, whilst the remaining themes will be priority areas within existing workstream groups already in motion.

The table on Page 3 shows the SEND governance arrangements and the groups accountable.

Monthly updates will be provided in the SEND newsletter re this progress

Those colleagues, partners, professionals and providers involved in the review, and who have agreed to be part of the formal Reference Group, have been invited to a progress and review meeting at the end of June.



In addition to ISOS, we also commissioned East Yorkshire Parent Care Forum to work alongside them in order to seek the views of parents/carers in the East Riding. These views fed into and informed the ISOS review.

EYPCF have continued to consult with parents/carers and are currently pulling together a summary report outlining their findings. Once finalised, these findings will be uploaded on to the Local Offer and will form part of the EYPCF's action plan.

These findings will be discussed and considered through the 0-25 SEND Board and the sub-groups highlighted overleaf to ensure any necessary actions are delegated to the appropriate workstream and included in their action plan.

SEND NEWSLETTER

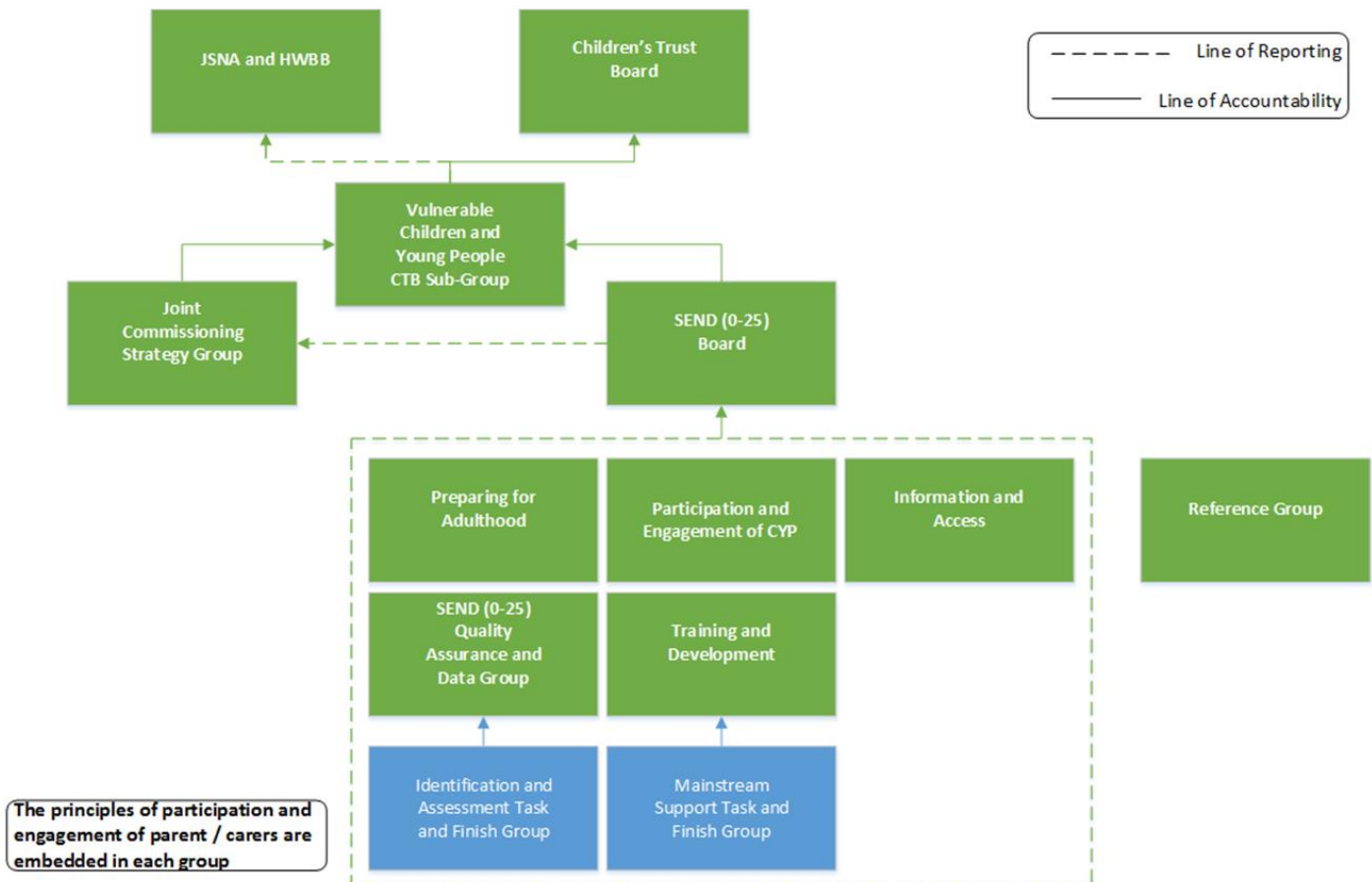
Issue 3 May/June 2018

3

SPECIAL EDUCATIONAL NEEDS AND DISABILITY INFORMATION FOR PROFESSIONALS, PARENTS/CARERS, CHILDREN AND YOUNG PEOPLE, AND VOLUNTEERS

SEND Reforms Lines of Accountability

SEND Reforms - Accountability, Governance and Leadership



The recommendations and actions outlined in the High Needs Strategic Review will be taken forward by the appropriate sub-group highlighted above, with regular updates and progress provided to the SEND (0-25) Board.

The High Needs Strategic Review will meet twice yearly to review progress. The next meeting will take place at the end of June 2018.

SEND NEWSLETTER

Issue 3 May/June 2018

4

SPECIAL EDUCATIONAL NEEDS AND DISABILITY INFORMATION FOR PROFESSIONALS, PARENTS/CARERS, CHILDREN AND YOUNG PEOPLE, AND VOLUNTEERS



**T.Y.L.E.R - The Young Leaders
of East Riding**



Here are Anya and Ceri at our latest coffee catch up meeting.

Do you know someone aged between 14 – 25?
Are they passionate about making a difference to young people's lives who have a disability?

Then T.Y.L.E.R may be the group for them!

T.Y.L.E.R are a group of young people who want to ensure all children and young people who have a disability, learning difficulty or health needs get their voices heard.

T.Y.L.E.R want to ensure that they make a difference to young people's lives.

Aims and Priorities –

- Gather views of young people across the East Riding about services available to them
- Engage with professionals to improve services and outcomes for children and young people with additional needs
- Feedback views to professionals about education, bullying, activities available to and much more
- Give young people a chance to build a social network

The group are always looking to gain new members if you are aware of any young people who would like to join the group please signpost them to complete the join us form on their website or alternatively you can contact Aneliese Foster – aneliese.foster@eastriding.gov.uk.

www.tylermakingadifference.co.uk

East Riding Local Offer – <http://www.eastridinglocaloffer.org.uk/>

SEND NEWSLETTER

Issue 3 May/June 2018

5

SPECIAL EDUCATIONAL NEEDS AND DISABILITY INFORMATION FOR PROFESSIONALS, PARENTS/CARERS, CHILDREN AND YOUNG PEOPLE, AND VOLUNTEERS

Short Break Parent/Carer Workshops

Short Break Parent Carer Workshop/Drop In Sessions

Are you a parent or carer of a child or young person aged 0 – 25 with special educational needs or a disability?

If so, we are hoping to gain feedback from you about short breaks. A short break could be anything from an hour in a mainstream or specialist group (e.g. youth groups, Guides, Scouts, football groups) or a one to one (including through a personal budget or direct payment) to an overnight stay.

We would like to hear what your idea of a short break is, your experience with accessing short breaks and any barriers you may have encountered in order to design future service delivery.

If you're interested please book your place or alternatively, just turn up! If you are struggling with transport please let us know. If you're unable to make this date but would like to take part please email – we would love to hear from you.

Date: Friday 8th June 2018

Time: 10am – 11am

Cost: FREE

Venue: Market Weighton Children's Centre, Princess Road, Market Weighton, YO43 3BY

Date: Monday 18th June

Time: 10am – 12pm

Cost: FREE

Venue: Bridlington North Library, Martongate, Bridlington, YO16 6YD

Date: Thursday 21st June 2018

Time: 10am – 12pm

Cost: FREE

Venue: Kingsway Children's Centre, Fountayne Street, Goole, DN14 5HQ

Contact: Kim Smith, Business Transformation and Improvement Officer

Tel: 01482 391496

Email: kim.smith@eastriding.gov.uk

SEND NEWSLETTER

Issue 3 May/June 2018

6

SPECIAL EDUCATIONAL NEEDS AND DISABILITY INFORMATION FOR PROFESSIONALS, PARENTS/CARERS, CHILDREN AND YOUNG PEOPLE, AND VOLUNTEERS

Training for Professionals



Introduction to Handwriting

This course is aimed at SENDCos/Early Years Teachers and anyone with an interest in improving children's handwriting.

Aims of the course

- pre-handwriting skills
- how to teach handwriting
- strategies to support handwriting difficulties
- suggesting resources



Tuesday 26th June

1-4pm

Driffield Ace Centre (Driffield School)

To book a place, contact

Sensory and Physical Teaching Service

01482 394000

SpecialistServices.HUB@eastriding.gcsx.gov.uk

Moving and Handling

This course is aimed at professionals who work with pupils who cannot physically move themselves.

Aims of the course

- Legal Responsibilities
- How to Move Pupils Safely
- Hoist Training (if appropriate)
- Looking After Yourself when handling



Tuesday & Wednesday 5th/6th June 2018

9-4pm (there is no charge for this course, and lunch is not provided)

The Specialist Services Hub,

Springhead Lane,

Anlaby Common,

HU5 5YJ (SatNav is HU5 5YZ??)

To book a place, contact

Sensory and Physical Teaching Service

01482 394000

SpecialistServices.HUB@eastriding.gcsx.gov.uk

SEND NEWSLETTER

Issue 3 May/June 2018

7

SPECIAL EDUCATIONAL NEEDS AND DISABILITY INFORMATION FOR PROFESSIONALS, PARENTS/CARERS, CHILDREN AND YOUNG PEOPLE, AND VOLUNTEERS

Local News In Brief

Formal opening for Kings Mill Special School

Kings Mill Special School's new building in Driffield was formally opened in a celebration event on 4th May 2018. The new building and alterations work were designed by the council's infrastructure and facilities department, working closely with the school and other council departments, and contributes to the council's overall strategic plan to have 3 area special schools. This will enable, wherever possible, children and young people with severe and complex needs, to be able to attend a special school within their own locality.



SEND Local Offer

One of the key elements of the SEND Reforms of 2014 was the requirement for all local authorities to publish and make accessible a local offer 'of all services available to support children who are disabled or who have SEN and their families'. The East Riding Local Offer was developed in co-production with parents/carers and professionals and, now that it is four years old, we are working towards refreshing and reviewing the site. A small working group has been evaluating the feedback we have and continue to receive on our Local Offer and are working hard with the council's web team to review it in line with that feedback. We are hoping the web team will begin work on the Local Offer website in July, and look forward to being able to launch the updated Local Offer in the Autumn term.

Transfer of Statements to Education Health and Care Plans

Another element of the SEND Reforms in 2014 was the requirements for all local authorities to have transferred all children and young people with Statements of SEN to an Education Health and Care Plan (where there remained a need for a plan) by 1st April 2018. East Riding was pleased to report in their May data return to the DfE that there were no transfers outstanding. A letter was received from the Parliamentary Under-Secretary of State for Children and Families acknowledging this positive return.

The team are now continuing their focus on improving the quality of EHC Plans and on Annual Reviews. The national SEN dataset, SEN2 returns, have recently been published and, although we are above the national average for the percentage of EHCPs issued within 20 weeks (67% in the ER), we are keen to improve on this performance.

SEND NEWSLETTER

Issue 3 May/June 2018

8

SPECIAL EDUCATIONAL NEEDS AND DISABILITY INFORMATION FOR PROFESSIONALS, PARENTS/CARERS, CHILDREN AND YOUNG PEOPLE, AND VOLUNTEERS

National News In Brief

Mental health in schools and colleges

The Department for Education (DfE) has published a report looking at how schools and colleges incorporate teaching about mental health into the academic curriculum. Findings from case study research in 36 schools, colleges and other educational institutions across England provide examples of the range of activities used to deliver support for mental health provided in schools and colleges.

Source: [DfE](#) **Date:** 08 May 2018

Further information: [Supporting mental health in schools and colleges: pen portraits of provision \(PDF\)](#)

Child mental health

The House of Commons Select Committees on Health and Education have published findings from a joint inquiry into the government's green paper, Transforming children and young people's mental health provision. Key recommendations include: considering the role of health visitors and children's centres in promoting emotional wellbeing in the early years; a full assessment of the current transition arrangements between child and adult mental health services, with a recommendation that this should be at 25 instead of 18-years-old; considering the social, emotional and mental health needs of young people excluded from school; and a distinct and separate set of proposals for children in care accessing mental health services.

Source: [UK Parliament](#) **Date:** 09 May 2018

Further information: [The government's green paper on mental health: failing a generation \(PDF\)](#)

[Transforming children and young people's mental health provision: a green paper \(PDF\)](#)

Department for Education areas of research interest The Department for Education (DfE) has published areas where DfE is interested in more research and new evidence. Areas identified include looking at: how schools can identify children's mild to moderate mental health needs, and the role early intervention can play in preventing escalation; what factors are associated with teacher and pupil wellbeing, and what interventions and approaches are effective in supporting and promoting wellbeing in schools and colleges; and what are children's routes through the care system, and how this impacts on later life outcomes, such as educational achievement, wellbeing and labour market outcomes.

Source: [DfE](#) **Date:** 17 May 2018

Further information: [Areas of research interest \(PDF\)](#)

SEND NEWSLETTER

Issue 3 May/June 2018

9

SPECIAL EDUCATIONAL NEEDS AND DISABILITY INFORMATION FOR PROFESSIONALS, PARENTS/CARERS, CHILDREN AND YOUNG PEOPLE, AND VOLUNTEERS

LOCAL CONTACT INFORMATION

Children's Commissioning and Quality Monitoring Team

County Hall, Cross Street, Beverley, HU17 9BA

For EHCP enquiries:

Telephone: (01482) 392163

Email: send.enquiries@eastriding.gov.uk

For commissioning and contract enquiries:

Telephone: (01482) 392254

Email: childrens.commissioning.team@eastriding.gov.uk

0-25 SEND Team

The Hub and Specialist Services,

Springhead Lane

Anlaby Common

Hull

HU5 5YJ

Telephone: (01482) 394000 Email address to be published soon.

Family Information Services Hub (FISH)

Free, impartial service for children, young people, parents/carers and the people who support them:

Telephone: (01482) 396469

www.fish.eastriding.gov.uk

SEND Information, Advice and Support (SENDIASS)

SENDIASS offers impartial, confidential information, advice and support for parents and carers of children and young people (aged 0-25) with special educational needs or disabilities and those who support them;

Telephone: (01482) 396469

Email: sendiass@eastriding.gov.uk

East Riding Parent/Carer Forum (EYPCF)

East Yorkshire Parent Carer Forum (EYPCF) works with the East Riding Council and health partners to help improve services for parents and carers of children and young people with special educational needs and disabilities. They consult with parents and carers all across **the East Riding about what works well and any issues they may have.**

Tel: (01262) 678283,

Mobile: 07813676941 ,

Email : admin@eypcf.co.uk

KIDS 16-25 SEND Information, Advice and Support Service

A young people's information, advice, support and advocacy service.

The information and support enables young people to participate in decisions about their future and is impartial, confidential and accessible.

Telephone: (01482) 467540 (Office)

Email: enquiries.yorkshire@kids.org.uk